

Fund Fact Sheet | 28 February 2023

BNI-AM DANA LIKUID

Money Market Fund

Effective Date	:	21-Dec-12
Effective Letter	:	S-14586/BL/2012
Launch Date	:	27-Dec-12
Type	:	Money Market Fund
NAV/Unit	:	1,762.55
Total NAV	:	873,889,393,164.72
Currency	:	Rupiah
Minimum Investment	:	Rp10,000
Total Units Offered	:	5,000,000,000
NAV Calculation	:	Daily
Subscription Fees	:	None
Redemption Fees	:	None
Switching Fees	:	Max. 2%
Management Fees	:	Max. 1.00% p.a.
Custodian Fees	:	Max. 0.15% p.a.
ISIN Code	:	IDN000149408
Mutual Fund Ownership	:	Can be accessed from https://akses.ksei.co.id

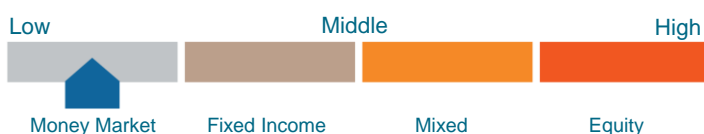
Main Risks

- Changing economic and political condition risks
- Default risks
- Liquidity risks
- Volatility risks
- Full closures risks
- Currency risks

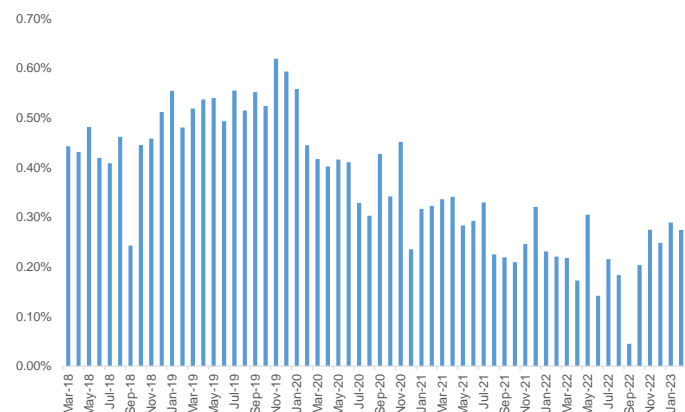
Risk Profile

- Risk level : Low

Risk Classification



Monthly Fund Performance in The Last 5 Years



Mutual Fund Performance

Date: 28-Feb-23

Performance	YTD	1 Mo	3 Mo	6 Mo	1 Yr	3 Yr	5 Yr	Since Inception
Mutual fund	0.56%	0.27%	0.81%	1.34%	2.60%	10.72%	24.54%	76.26%
Benchmark*	0.48%	0.23%	0.72%	1.38%	2.65%	9.85%	20.71%	57.53%

	Month	Return	Additional Info
Best month	May-22	0.31%	- YTM: 3.73%
Worst month	Sep-22	0.04%	- Current yield: 3.21%

*Benchmark: TD 1Month (after tax)

Disclaimer:

INVESTMENT THROUGH MUTUAL FUNDS CONTAINS RISK. BEFORE DECIDING TO INVEST, PROSPECTIVE INVESTORS MUST READ AND UNDERSTAND THE PROSPECTUS. PAST PERFORMANCE DOES NOT GUARANTEE/REFLECT PERFORMANCE INDICATIONS IN THE TIME TO COME. OTORITAS JASA KEUANGAN DOES NOT GIVE A STATEMENT TO APPROVE OR NOT APPROVE THIS FUND, AND DOES NOT GIVE A STATEMENT ABOUT THE TRUTH OR ADEQUACY OF THIS FUND'S PROSPECTUS. EVERY STATEMENT THAT CONTRADICT THE PREVIOUS STATEMENTS IS A LAW VIOLATION. Mutual funds are Capital Market products and not products issued by Sales/Banking Agents. An Investment Fund Selling Agent is not responsible for the demands and risks of managing the portfolio of mutual funds carried out by the Investment Manager. This product information summary does not replace the Mutual Fund Prospectus and is prepared by PT BNI Asset Management only for information needs and does not constitute a form of offer to buy or demand to sell. All information contained in this document is presented correctly. If necessary, investors are advised to seek professional opinion before making an investment decision. Past performance is not necessarily a guide to future performance, nor is it an estimate made to provide an indication of future performance or trends. PT BNI Asset Management as the Investment Manager is licensed and supervised by the OJK.

BNI Asset Management Profile

PT BNI Asset Management is one of the largest asset management companies in Indonesia with experience over 20 years since its establishment as the asset management division of PT BNI Securities in 12 April 1995. The company spun off from PT BNI Securities in 2011, and had earned its license as Investment Manager from Bapepam-LK (No. KEP-05/BL/MI/2011, dated 7 July 2011). Currently, the company is managing 80 (eighty) mutual fund products.

Investment Objectives

BNI-AM Dana Likuid aims to provide an attractive investment growth rate with minimum risk while obtaining high liquidity to meet cash needs in a short time.

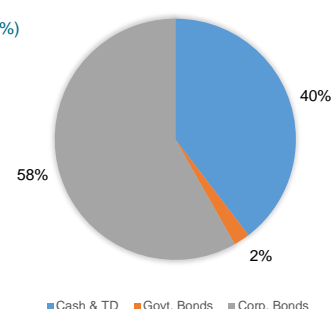
Investment Policy

100% (one hundred percent) on domestic money market instruments with less than 1 year maturity and/or fixed income instruments.

Top 10 Underlying Securities

BOND	Tower Bersama Infrastructure (9.95%)
TIME DEPOSIT	BPD Nagari/Sumbar (8.01%)
SUKUK	Indah Kiat Pulp & Paper (7.43%)
BOND	Bank BRI (7.37%)
BOND	PT Pegadaian (6.25%)
TIME DEPOSIT	Bank Sahabat Sampoerna (5.72%)
TIME DEPOSIT	BPD DKI (5.72%)
TIME DEPOSIT	BPD Sulsebar (4.58%)
BOND	Sinar Mas Agro (4.55%)
TIME DEPOSIT	BPD Sumselbabel (4.01%)

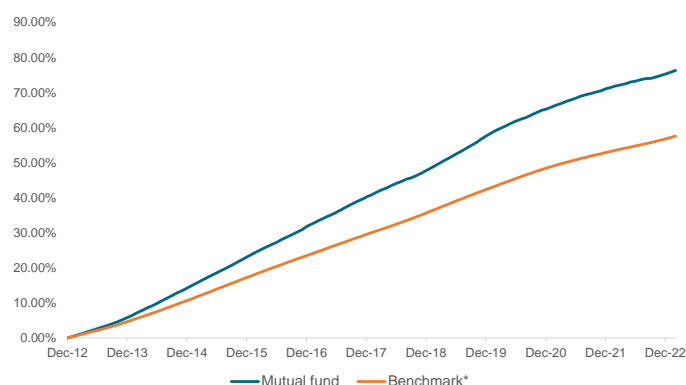
% Portfolio Composition



Custodian Profile

PT Bank DBS Indonesia (DBSI) obtained a license to open a Custodian business and operational to the Capital Market and Financial Institution Supervisory Agency (BAPEPAM & LK) on August 9th, 2006 with Decree number KEP-02/BL/Kstd/2006.

Fund Performance vs Benchmark (Cumulative)



PT BNI ASSET MANAGEMENT

Centennial Tower, 19th Floor
Jln. Gatot Subroto Kav 24 & 25 Jakarta 12930
T. +62-21 2996 9646 (Hotline) / F. +62-21 2996 9647
E. customerservices@bni-am.co.id

PT BNI Asset Management is licensed and supervised by Otoritas Jasa Keuangan

 @bniassetmanagement  BNI Asset Mgmt
For more information visit www.bni-am.co.id


pahami, nikmati!